



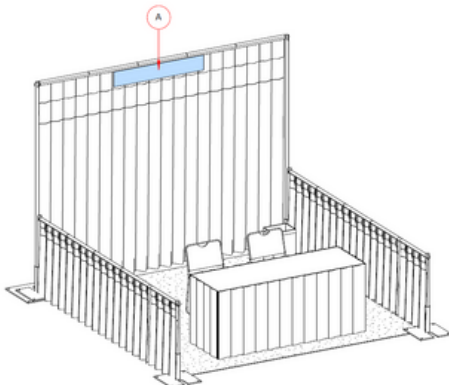
## Sample "Turnkey" Booth






A_ GRAPHICS				
I.D	MATERIAL	COLOR / GRAPHIC TYPE	GRAPHIC SIZE	THK
A	GRAPHIC_PVC	EXPO-GRAPHIC	44" W X 7" H	1/8"

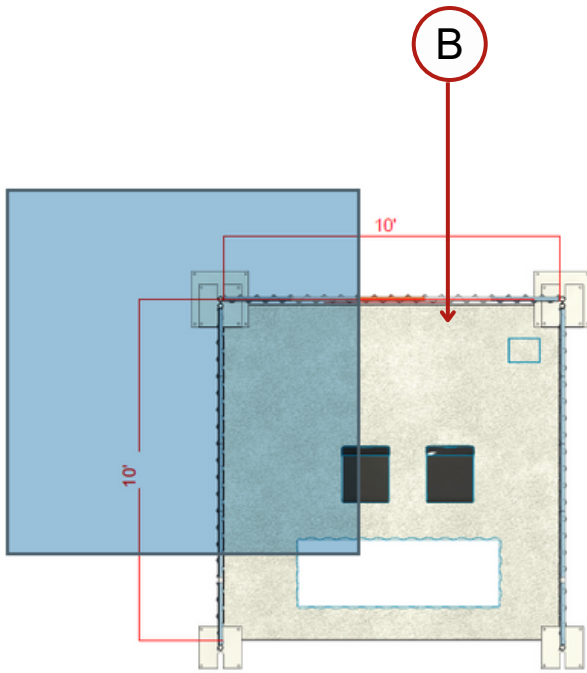
### "All Inclusive Turnkey" Booth Package Includes:

- 10' x 10' Pipe-and-Drape exhibit (3 meter x 3 meter)
- 3' side rails
- One 6' Skirted Draped table and 2 chairs
- Fully carpeted
- One 500-watt electrical power outlet (120 volts)
- Booth Sign
- 1 wastebasket
- 1 Complimentary Conference Pass (limited space)
- 5 Free Booth Staff Personnel badges (additional badges at \$25.00 each)
- 15 Free Guest Passes
- Free listing in the show's official website and in the Exhibitor's Directory
- 3 Free entries in the show's "Onsite New Product Showcase" at the exhibition hall
- Exhibitor's Service Manual and Service Kit
- Receipt of the show's official monthly Newsletter
- Your Official Press Release listed in the show's website and Social Media!
- Your company information emailed monthly to registered visitors

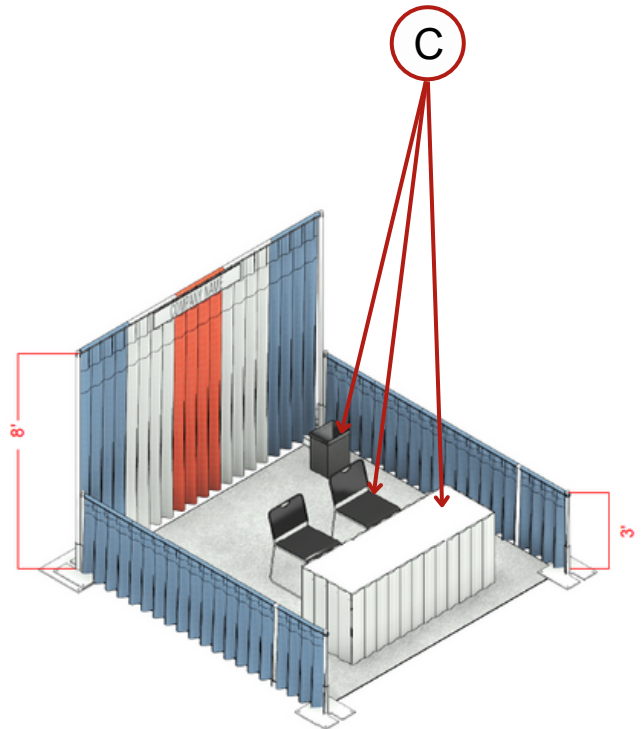


B_FLOOR				
CNT	TYPE	MATERIAL COLOR	FLOOR -WIDTH	FLOOR-LENGHT
1	CARPET-EXPO	EXPO-CARPET_GREY	10' - 0"	10' - 0"

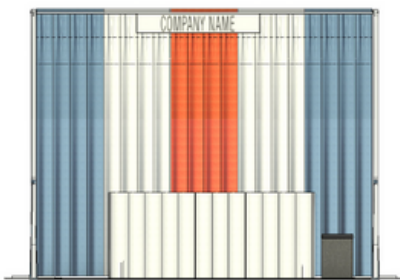
C_EXPO FURNITURE_LOAD LIST				
ID	IMG	CNT	TYPE - MATERIAL	
CH1B		2	CHAIR-BLACK SIDE CHAIR: . -	
TD6A		1	DRAPE_TABLE: 6' FT - EXPO-DRAPE_WHITE	
WBKT		1	WASTE BASKET: . -	



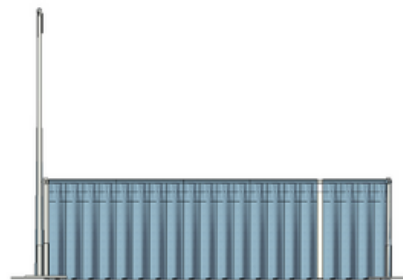
④ 1B\_PLAN VIEW- FURNITURE SETUP  
1/4" = 1'-0"



③ 0D\_PERSPECTIVE VIEW



① FRONT VIEW  
1/4" = 1'-0"



② LEFT VIEW  
1/4" = 1'-0"